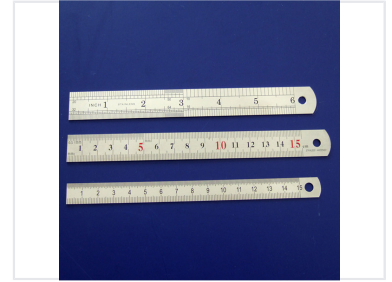


# Precision Stainless Steel Ruler Set

This set includes three stainless steel precision rulers for accurate measurements. They feature both inch and millimeter graduations and are ideal for engineering, drafting, and general measurement tasks.



## Product Overview

### Precision Stainless Steel Ruler Set

This professional-grade ruler set is engineered for high-precision measurement tasks in drafting, engineering, and workshop environments. Constructed from durable stainless steel, these rulers feature clear, etched graduations for long-term legibility and resistance to wear. The versatile set covers a wide range of needs with options for both imperial and metric increments, ensuring reliable accuracy for every project.

## Technical Specifications

Material	Stainless steel
Available lengths	100mm to 2000mm
Graduation process	Engraved etching

## Features

### Graduation details

- Imperial: 1/32, 1/16, 1/64, 1/10 inch
- Metric: 0.5mm increments

### Key Features

Corrosion Resistant, High Precision, Hanging Hole, Metric & Imperial