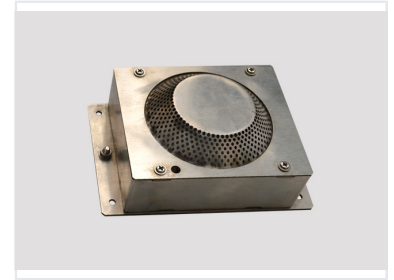


Precision Sheet Metal Component

This precision-engineered sheet metal component is fabricated from high-grade steel. It features multiple bends, cutouts, and mounting holes for versatile integration into various mechanical systems.



ADDITIONAL IMAGES



Product Overview

Precision Engineering

This high-grade sheet metal component is designed for versatile integration into industrial machinery and mechanical systems. It features precision-engineered bends, cutouts, and pre-drilled mounting holes for seamless installation. Constructed from durable steel, the part offers exceptional structural support and corrosion resistance for demanding professional environments.

Technical Specifications

Integrated Features

- Multiple bends and cutouts
- Pre-drilled mounting holes
- Integrated tabs for retention
- Circular perforated ventilation
- Mounting flanges

Materials

High-Grade Steel, Stainless Steel

Applications

Primary Applications

Mechanical Systems • Electronic Enclosures • Industrial Machinery • Structural Support