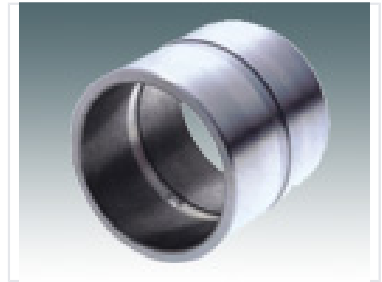


Precision Rolling Bearing for Industrial Machinery

This precision-engineered rolling bearing is designed for machinery and industrial applications. It provides smooth, efficient rotational movement, reducing friction and wear in mechanical systems.



Overview

Precision Rolling Bearing

This precision-engineered rolling bearing is designed for high-performance industrial machinery, offering superior rotational efficiency. Constructed from high-quality materials, it minimizes friction and wear while ensuring durability under demanding conditions. It serves as a reliable solution for complex mechanical systems that require long-lasting, consistent operational performance.

Key Features

Typical Applications

- Industrial machinery systems
- Rotational mechanical equipment
- High-load mechanical assemblies

Core Benefits

High Efficiency, Low Friction, Industrial Grade, Wear Resistant