

Precision Planetary Gearbox

This precision planetary gearbox is engineered for optimal performance in industrial automation. Its planetary gear system ensures high torque density and smooth operation.



Overview

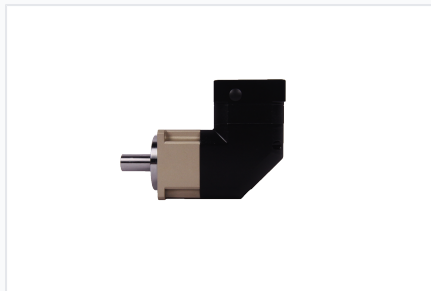
Precision Planetary Gearbox

This high-precision planetary gearbox is engineered for demanding industrial robotics and automation applications. Its robust design offers high torque density, smooth operation, and minimal backlash for reliable, long-term performance. The unit is designed to integrate seamlessly into precision motion control systems, ensuring accurate power transmission for robotic arms and industrial machinery.

Technical Specifications



Compact, high torque density planetary gearbox suitable for servo motors and motion control.



Precision gearbox engineered for reliable robotic power transmission.



Durable and reliable gearbox construction for demanding industrial environments.

Backlash Precision Grades

P0 • P1 • P2

Output Shaft Configuration

- Straight Axis (S1)
- Attachment Straight Axis (S2)

Series Types

FAB, FABR, FAD, FADR, FB, FE, FPG, FPGA

Ordering Information

Engagement Model

Step	Description
Inquiry	Define application, industrial use, and technical requirements
Quote	Model selection, solution proposal, and delivery scheduling
Trial	Sample provision to evaluate service and performance
Manufacturing	Full order production with continuous status updates