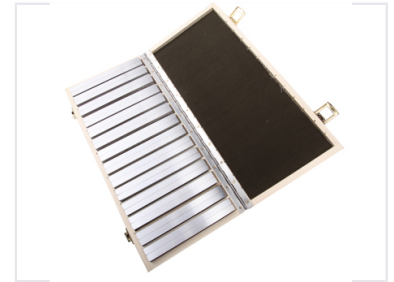
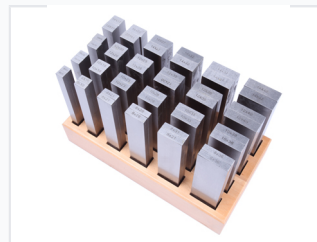
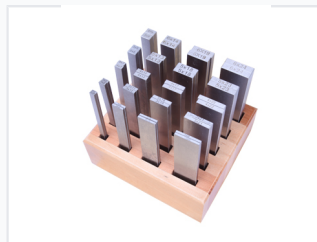


Precision Parallel Set

Precision parallel sets are made from high-grade alloy steel, hardened to HRC56-62 and finely ground in pairs. The longitudinal surfaces are flat and parallel, machined with precise dimensions to guarantee high accuracy and stability over long periods.



ADDITIONAL IMAGES



Product Overview

Precision Performance

These precision parallel sets are manufactured from high-grade alloy steel, engineered to maintain consistent stability and accuracy over extended use. Each pair is finely ground to ensure exceptional parallelism and tight height tolerances, preventing distortion in demanding machining environments. They serve as essential tools for toolmakers and machinists requiring reliable, stable support for workpieces during milling, grinding, and inspection tasks.

Technical Specifications

Hardness Range

56 HRC
Minimum HRC

62 HRC
Maximum HRC

Construction Material

High grade alloy steel

Key Accuracy Standards

Parallelism Guaranteed, Fine Ground Finish, Precision Height Tolerance

Storage and Presentation

Protective Features

- Organized wooden block holder
- Fitted interior to maintain dimensional integrity
- Dark internal lining for corrosion protection

Included Storage

Fitted wooden case with secure metal clasps