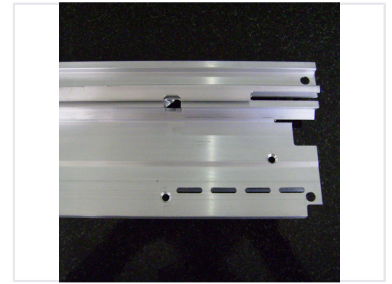


Precision Machined Aluminum Cylinder with Apertures

This precision-machined aluminum cylinder features strategically placed apertures. The stepped design at one end includes mounting points for integration within a larger mechanical assembly.



Product Overview

Precision Engineered Component

This precision-machined aluminum cylinder is designed for high-performance mechanical assemblies. Featuring a complex geometry with a central square cutout, longitudinal slots, and various circular and elongated apertures, it offers versatile integration options. Its robust construction and high-standard finish ensure reliability in demanding industrial environments.

Technical Specifications

| | |
|----------------|----------|
| Material | Aluminum |
| Surface Finish | Silver |

Design Features

Structural Design

Stepped Design • Integrated Mounting Points

| | |
|----------------|---|
| Aperture Types | Central Square Cutout, Longitudinal Slot, Circular Holes, Elongated Holes |
|----------------|---|

Application

Intended Use

- Mechanical assembly component
- Precision industrial machinery