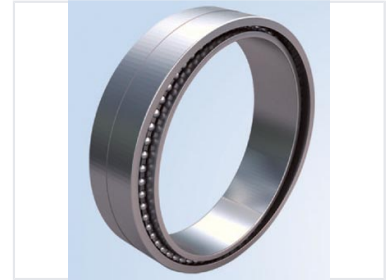


Precision Engineered Industrial Bearing

This precision-engineered bearing is designed for demanding applications. It features hardened steel races and high-quality ball bearings, ensuring smooth and reliable operation under heavy loads and high speeds.



Product Overview

Precision Engineered Industrial Bearing

This precision-engineered bearing is designed specifically for demanding industrial applications. Featuring robust construction with hardened steel races and high-quality ball bearings, it ensures smooth and reliable operation even under heavy loads and high speeds. Its compact design allows for seamless integration into a wide range of existing industrial machinery, providing optimal performance and an extended service life.

Technical Specifications

Key Performance Features

- High load capacity
- High-speed operation
- Compact design for easy integration
- Extended service life

Application Suitability

Industrial Machinery • Heavy Load Equipment • High-Speed Systems

Material Composition

Hardened Steel Races, High-Quality Ball Bearings