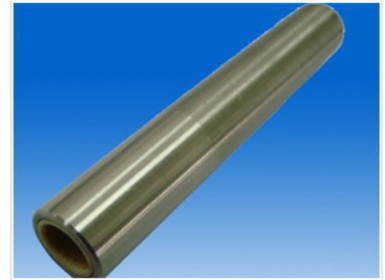


# Precision Component for Apparel/Shoe Machinery

This precision-engineered component is designed for use in garment, shoe, and accessory manufacturing machinery. The part features a smooth, metallic finish and a hollow core.



## Product Overview

### Precision Engineering for Apparel Machinery

This precision-engineered cylindrical component is designed specifically for integration into garment, shoe, and accessory manufacturing machinery. Featuring a smooth, metallic finish and a hollow core, it serves as a critical mechanical element, such as a guide, sleeve, or bearing surface. Built to exacting tolerances, this component is crafted from hardened steel alloy to ensure optimal performance and durability in demanding industrial environments.

## Technical Details

### Key Design Features

- Cylindrical geometry
- Hollow core design
- Smooth metallic finish
- High-tolerance manufacturing

Component Type	Cylindrical mechanical component
Material	Hardened Steel Alloy

## Application

### Compatible Machinery

Garment Machinery • Shoe Manufacturing • Accessory Production

## Performance

### Performance Highlights

**1 High**

Durability Rating

**1 Precision**

Tolerance Level