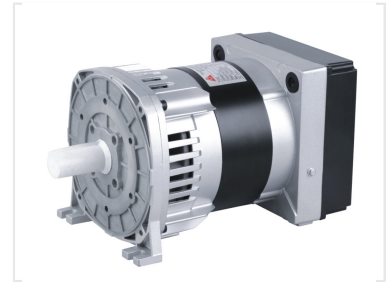


Power Generation Alternator

This high-performance alternator is designed for power generation applications. It features robust construction with an aluminum housing and a terminal box.



Product Overview

High-Performance Power Generation

This alternator is engineered for efficient and reliable operation across various industrial and commercial power generation applications. It features a robust construction with a silver-finished aluminum housing and a black terminal box, ensuring durability in demanding environments. Designed for easy installation and maintenance, the unit provides a stable electrical power output from a mechanical shaft input.

Technical Features

Performance Highlights

1 DC
Output Type

Operational Parameters

Continuous Duty, Insulated Construction, High Efficiency, Industrial Grade

Design & Build

Housing Material

Silver-finished aluminum

Terminal Box

Integrated black terminal box

Power Input

Mechanical shaft

Application

Target Environments

- Industrial Power Plants
- Commercial Backup Systems
- Mechanical Power Conversion
- General Power Generation