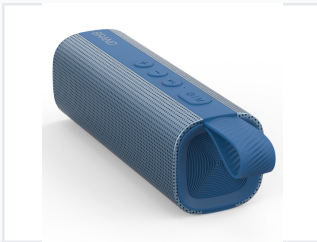


# Portable Waterproof Bluetooth Speaker with Metal Grid

This portable Bluetooth speaker is designed with a durable metal grid and waterproof construction. It delivers 10W of audio output and includes integrated controls for convenient use.



## ADDITIONAL IMAGES



## Product Overview

### Portable Audio Solution

The G12 Metal Grid Bluetooth Speaker is designed for durability and performance, featuring a robust metal grid exterior and waterproof construction. It delivers clear audio with strong bass, making it an ideal choice for both indoor and outdoor environments. With versatile connectivity options including Bluetooth, AUX, TF card, and U disk, this speaker adapts to various media sources seamlessly.

## Technical Specifications

### Output Power

**10 W**

Audio Output

### Connectivity

- Bluetooth
- AUX Input
- TF Card
- U Disk

### Key Features

Waterproof, Hands-free Calling, Mobile Charging Support, Strong Bass

## Physical Attributes

### Build Material

Metal Grid

### Dimensions

183 x 60 x 60 mm