

Portable Thermal Imaging Camera

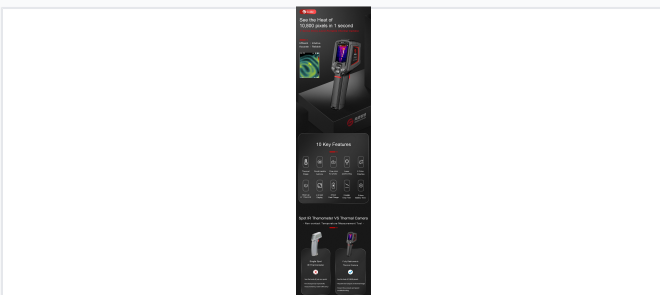
This portable thermal imaging camera is an affordable temperature measuring tool for building diagnostics, HVAC, and electrical inspections. It helps detect large areas and accurately pinpoint fault spots.



ADDITIONAL IMAGES



Product Overview



High-resolution thermal imaging allows for rapid detection of large areas compared to single-spot thermometers.



Complete package including camera, charging accessories, and storage options.

Professional Thermal Imaging

The T120 series is an affordable, entry-level thermal imaging camera designed for building diagnostics, HVAC inspections, and electrical system analysis. It overcomes the limitations of single-spot infrared thermometers by providing a 120x90 resolution display, allowing for rapid detection of large areas and precise fault pinpointing. With a rugged, portable design, it offers a user-friendly interface, fast boot-up times, and comprehensive data analysis capabilities for professional efficiency.

Key Features

Radiometric Imaging, Focus-free, 1-Second Boot-up, Rugged Design, Pocket-sized

Imaging Performance



User-friendly interface with ergonomic buttons and multiple color palette options for customized viewing.

Color Palettes

Iron Oxide Red • Hot Iron • Arctic • Rainbow 1 • Rainbow 2 • White Heat

IR Resolution

120x90 pixels

Field of View (FOV)

50° x 38°

Thermal Sensitivity

0.06 °C

Measurement Capabilities



Fully radiometric imaging with high thermal sensitivity for precise temperature difference detection.

Measurement Tools

- Hot spot display
- Cold spot display
- Center spot display
- Full-screen max/min temperature warning
- Auto-tracking

Temperature Range

-20°C to 400°C (Auto switching)

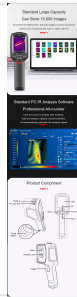
Durability and Physical



Built for rugged environments with IP54 protection and 2-meter drop test certification.

Encapsulation	IP54
Drop Test Rating	2 meters
Dimensions	194mm x 61.5mm x 76mm
Weight	350 g

Connectivity and Power



Standard PC analysis software allows for professional reporting and detailed data analysis.

Battery Life (T120)	8 hours
Battery Life (T120V)	5 hours
Connectivity	USB, Type-C, Removable TF Card, WiFi (T120V only)

Model Comparison

Comparison Table

Feature	T120	T120V
WiFi	N/A	Yes
Battery Life	> 8 hours	> 5 hours