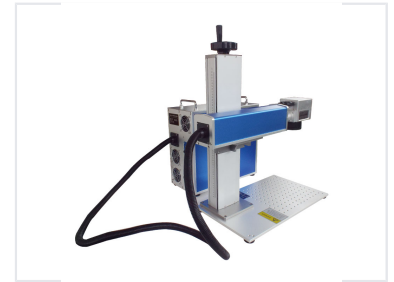


## Portable Split Fiber Laser Marker

This portable split fiber laser marker is designed for precision marking on a variety of materials. Its split design allows for flexible integration into different production environments.



### ADDITIONAL IMAGES

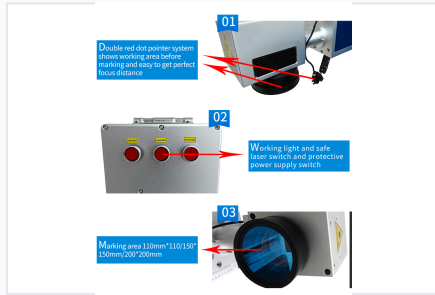


### Overview

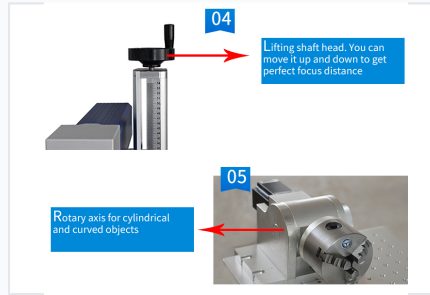
#### Precision Portable Laser Marking

This portable split fiber laser marking machine is designed for high-precision, permanent marking on a wide range of materials including metals and non-transparent plastics. Its compact, split design allows for flexible integration into various production environments, from small workshops to industrial assembly lines. Featuring a high-speed scanning system and user-friendly software, this machine delivers consistent, high-quality results for logos, serial numbers, barcodes, and intricate designs.

## Technical Specifications



Features a double red dot pointer system for easy marking area preview and perfect focus distance adjustment.



The lifting shaft allows for precise vertical adjustment, while the rotary axis enables marking on cylindrical and curved objects.



Compact design with dimensions of 800mm x 400mm x 740mm, ideal for space-constrained environments.

### Performance Metrics

**7000 mm/s**  
Marking Speed

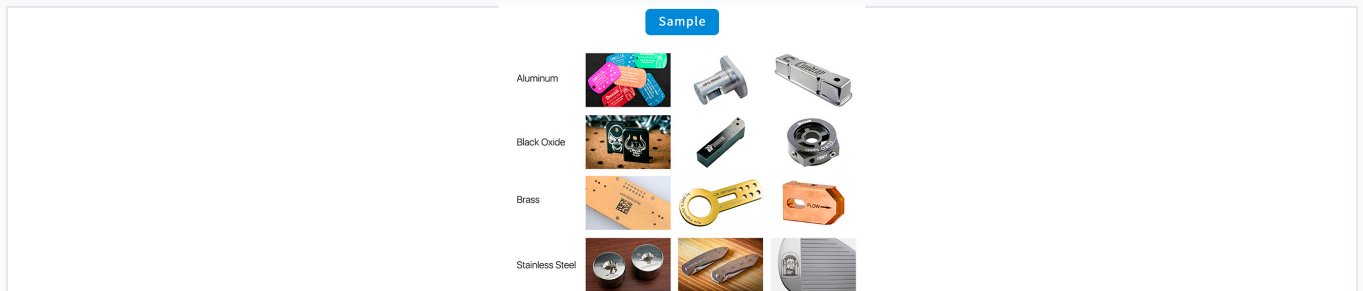
**100000 hours**  
Laser Source Lifetime

**0.001 mm**  
Repeatable Accuracy

### Machine Specifications

Parameter	Value
Laser Power	20W
Wavelength	1064nm
Cooling System	Air Cooling
Modulation Frequency	20kHz - 200kHz
Line Width	0.01 - 0.1mm
Working Voltage	AC220V (110V optional)

## Applicable Materials & Industry



Showcasing high-precision marking on various materials including aluminum, brass, and stainless steel.

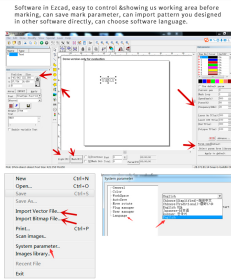
### Common Industry Applications

- Industrial Bearings & Gears
- Auto Parts
- Hardware Tools
- Aerospace Components
- Integrated Circuit Chips
- Computer Accessories
- Watches & Jewelry
- Electronics & Communication
- Food Packaging
- Wire & Cable

### Compatible Materials

Copper, Aluminum, Stainless Steel, Iron, Hard Alloy, Chrome, Titanium, Gold, Silver, Plastics, Non-transparent Non-metals

## Software & Operation



User-friendly software interface allowing for parameter configuration and pattern import.

### Advanced Control Interface

The system utilizes professional marking software that allows for easy control and visualization of the working area before marking. Users can import patterns designed in other software, save custom marking parameters, and adjust settings such as speed, power, and frequency. The interface supports multiple languages including English, Chinese, Japanese, and Korean.

## Included Accessories

### Package Content



- 1 \* Fiber Laser Marker
- 1 \* Power Cable
- 1 \* USB Cable
- 1 \* Software U Disk
- 1 \* Pedal Switch
- 1 \* Tools
- 1 \* Laser Safety Goggles
- 1 \* User Manual

The system includes all necessary components for immediate setup and operation.

### Package Contents

- Fiber Laser Marker
- Power Cable
- USB Cable
- Software U Disk
- Pedal Switch
- Tool Kit
- Laser Safety Goggles
- User Manual