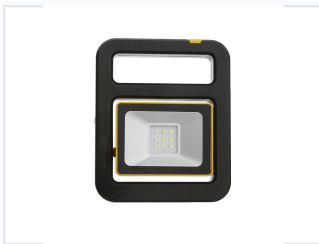


Portable LED Work Lamp

This LED working lamp is designed for portable illumination in various work environments. It features a robust construction with a black and yellow frame and an adjustable stand for flexible positioning.



ADDITIONAL IMAGES



Product Overview

Versatile Portable Illumination

This rechargeable LED work lamp is designed for high-performance portable lighting in professional work environments. Featuring a powerful 10W SMD2835 LED source, it delivers 800 lumens of consistent brightness. The durable, fold-flat design includes an integrated handle and flexible hook, making it an ideal choice for both indoor and outdoor maintenance tasks.

Technical Specifications

Power Consumption	10 W
Brightness	800 lm
Battery Capacity	4400 mAh
Battery Voltage	3.7 V

Performance Metrics

Key Performance Metrics

4 Hours
Charging Time

2 Hours
Run Time

Design and Utility

Ingress Protection

IP54

Core Features

USB Output (5V 1A), Foldable Stand, Integrated Hook, Battery Indicator, Touch Switch