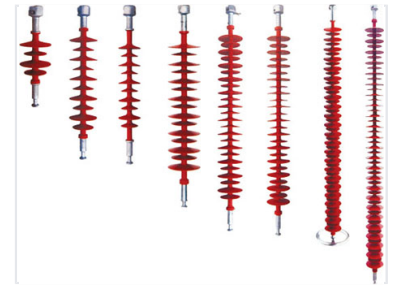


# Polymeric Suspension Insulator

This composite suspension insulator features a polymeric housing with sheds, increasing surface creepage distance and preventing flashover. It is terminated with metallic end fittings for secure attachment to transmission lines or substation equipment.



## Product Overview

### High-Performance Polymeric Suspension Insulator

This polymeric suspension insulator is engineered for reliable performance in high-voltage transmission lines and substation applications. Featuring a specialized polymeric housing with advanced shed geometry, it maximizes surface creepage distance to effectively prevent flashover. Designed for durability, the unit incorporates robust metallic end fittings to ensure secure installation and long-term resistance against harsh environmental factors.

## Design & Construction

### Type

Suspension • Composite

### Housing Material

Polymeric

## Performance Features

### Key Performance Benefits

- Enhanced surface creepage distance
- Flashover prevention
- High dielectric strength
- Environmental resistance

### Suitable Applications

High-Voltage Transmission, Substation Equipment, Outdoor Installations