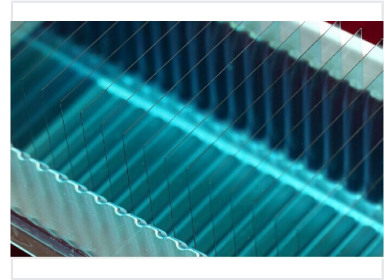


# Polished Optical Blue Glass Sheet

This polished optical blue glass sheet is characterized by exceptional flatness, parallelism, and surface quality. The blue tint enhances specific optical properties, making it suitable for applications requiring selective light transmission or filtering.



## Product Overview

### High-Precision Optical Solution

This polished optical blue glass sheet is engineered for applications demanding exceptional flatness, parallelism, and superior surface quality. The distinctive blue tint is specifically designed to enhance optical properties, facilitating selective light transmission and effective filtering. Manufactured to meet stringent industry standards, this material minimizes distortion to ensure optimal image clarity in advanced optical systems.

## Technical Specifications

### Customization

- Custom Dimensions
- Custom Thickness
- Custom Coatings

### Surface Quality

High-precision polished

### Optical Characteristics

Blue Tint, Selective Light Transmission, Minimal Distortion

## Applications

### Primary Applications

- Precision Optical Instruments
- Scientific Research
- Advanced Imaging Systems
- Car Navigation Systems
- Digital Cameras
- LCD Monitors