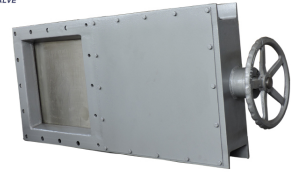


Pneumatic Square Port Knife Gate Valve

This knife gate valve features the same construction as a standard knife gate valve, but has a body and gate in a rectangular shape. It has a rising stem tight model and square flange ends.



ADDITIONAL IMAGES



Product Overview

Pneumatic Square Port Knife Gate Valve

This pneumatic operation square port frame knife gate valve utilizes a square board as the primary opening and closing element, moving vertically to achieve full flow control. Engineered for reliability in industrial settings, it is specifically designed to cut off media flow in pipelines. It is an ideal solution for handling powders, grains, small particles, and various bulk materials in sectors such as metallurgy, mining, and chemical processing.

Model Number

FRZ641H

Technical Specifications

Sealing Options

Rubber • Metal seal

Materials Composition

Component	Available Materials
Body	Carbon steel, Stainless steel
Disc	Stainless steel, Carbon steel

Key Design Features

- Rising stem tight model
- Rectangular valve shape
- Square flange ends
- Standardized actuators and accessories

Size Range	DN200xDN200 to DN1200xDN1200
Pressure Ratings	Class 150, PN6, PN10
Operating Temperature	120 °C
Operating Mode	Pneumatic
Connection Type	Square flange