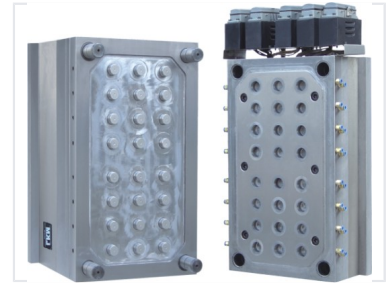


# Plastic Cap Injection Mold

This precision-engineered injection mold is designed for high-volume production of plastic caps. Its multi-cavity configuration increases output, while the hardened steel construction ensures durability.



## ADDITIONAL IMAGES



## Overview

### High-Efficiency Cap Production

This precision-engineered injection mold is designed specifically for the high-volume manufacturing of plastic caps. Featuring a robust multi-cavity configuration, it is built for increased output and consistent part quality. The design incorporates an advanced cooling system to optimize cycle times, ensuring reliable performance and minimal maintenance for efficient, cost-effective production.

## Technical Specifications

Construction Material	Hardened Steel
Machine Compatibility	Standard injection molding machines

## Key Features

Design Highlights	Multi-cavity configuration, Advanced cooling system, Precision-engineered, High-volume production
-------------------	---

## Performance

### Performance Metrics

**1 Minimal**

Maintenance Level