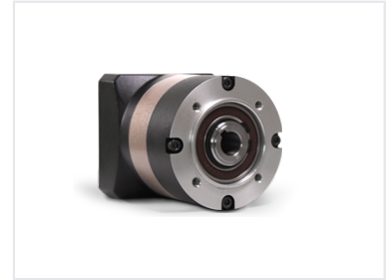


Planetary Gearbox

This planetary gearbox provides precision gearing and is cost-effective. It delivers high efficiency and minimizes noise during operation.



Overview

High-Performance Planetary Gearbox

This planetary gearbox is engineered for demanding industrial applications requiring high precision and reliability. Utilizing alloy forged steel and advanced helical gear design, it offers exceptional torque capacity and smooth operation. It is an ideal solution for robotics, automation, and complex motion control systems where efficient power transmission is critical.

Technical Construction

Construction Details

- Alloy forged steel raw material
- Advanced helical gear design
- Full needle roller bearings
- High-level gear grinding finish
- Powerful heat treatment processing

Applications

Suitable Applications

Robotics, Industrial Automation, Precision Motion Control, Power Transmission