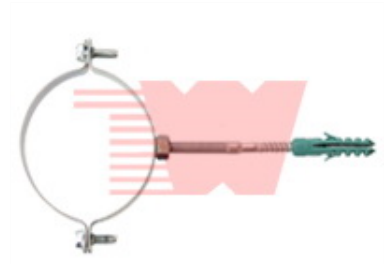


Pipe Clamp with Anchor

This pipe clamp is designed to secure pipes or tubes to a surface. It includes a screw to tighten the clamp and a plastic anchor for stable mounting.



Product Overview

Versatile Pipe Mounting Solution

This metallic pipe clamp with an integrated screw and plastic anchor is engineered for reliable pipe and tube securement. Designed for professional plumbing, HVAC, and industrial installations, it ensures a stable mounting point on various surfaces. The clamp features an adjustable screw mechanism for a tight grip, while the included plastic anchor facilitates quick and secure installation into pre-drilled holes.

Technical Specifications

Material Finish

Metallic

Component Type

Pipe Clamp with Anchor

Suitable Applications

Plumbing, HVAC, Industrial

Installation Features

Installation Method

- Pre-drilled hole insertion
- Screw-tightened clamping mechanism