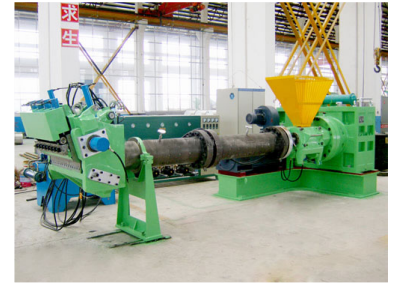


# Pin Barrel Cold Feed Rubber Extruder

This pin barrel cold feed rubber extruder is designed for processing rubber compounds. Its pin-barrel design ensures efficient cooling and temperature control for consistent product quality.



## Product Overview

### High-Efficiency Cold Feed Extrusion

This Pin-Barrel cold feed rubber extruder is engineered for versatile industrial applications, capable of processing tread, pipe, and cable materials. Featuring an advanced pin-barrel design, the machine ensures superior plastication and mixing efficiency through its specialized multi-zone barrel structure. With automated temperature control and a robust DC motor drive, it delivers consistent, high-quality output for demanding production environments.

## Technical Specifications

### Barrel Construction

- Dual metal structure
- Circumferential boring
- Multi-zone design
- Spiral slots in feeding zone

Extruder Type	Pin-Barrel Cold Feed
Drive Motor	DC Motor
Screw Material	Nitrogenation steel
Reducer Gears	Hardened alloyed steel

## Process Control

### Feeding Enhancement

Spiral slots • Side rolls

Temperature Regulation	Hot water circulation device
------------------------	------------------------------

## Applications

Typical Applications	Tread, Pipe, Cable, Rubber Profiles
----------------------	-------------------------------------