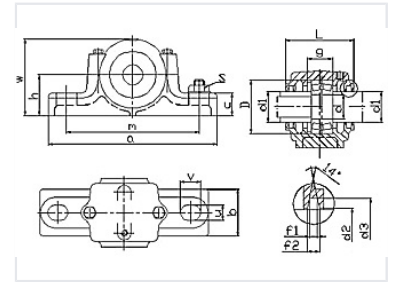


Pillow Block Bearing Unit SN200

This pillow block bearing unit is designed for robust performance in machinery and industrial applications. It features a split housing for easy maintenance and includes a lubrication fitting to ensure proper bearing lubrication.



Overview

Robust Industrial Support

The SN200 is a high-performance pillow block bearing unit engineered for demanding industrial machinery. Featuring a specialized split housing design, it facilitates streamlined installation and maintenance, allowing for quick inspection or replacement of internal components without requiring a full system dismantle. This unit ensures consistent rotational accuracy and extended operational lifespan through its integrated lubrication fitting system.

Design Features

Housing Configuration

Split Housing, Pillow Block, Lubrication Port

Performance

Maintenance Capability

Simplified bearing inspection and replacement via split-housing architecture

Technical Dimensions

Available Measurement Parameters

- d (Shaft Diameter)
- d1, d2, d3
- L (Total Length)
- h (Center Height)
- W (Width)
- a, q, m
- V
- f1, f2, g