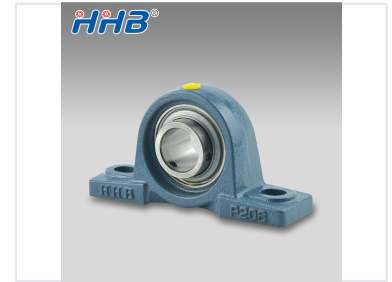
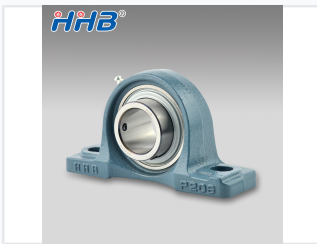


Pillow Block Bearing Unit

Pillow block bearing units provide support for rotating shafts. The bearing housing contains a bearing and is connected to a base for secure mounting.



ADDITIONAL IMAGES



Overview

High-Performance UCP Series Pillow Blocks

The UCP series pillow block bearing units are robust, ready-to-mount assemblies designed to provide reliable rotational support where the mounting surface is parallel to the shaft axis. Featuring a self-aligning design and durable cast iron housing, these units are ideal for demanding industrial environments including conveyor systems and agricultural machinery. Each unit is pre-lubricated and equipped with advanced sealing options to ensure a long service life and protection against contamination.

Material Specifications

Steel Ball Grade
G10

Bearing Material	Chrome Steel (GCR15)
------------------	----------------------

Housing Material	HT200 Cast Iron
------------------	-----------------

Technical Performance

Performance Metrics

60 HRC
Min Hardness

63 HRC
Max Hardness

Bearing & Housing Coordination	H7, J7, K7
--------------------------------	------------

Design & Options

Available Seal Types

- Black seal
- Star seal
- Double seal
- Triple lips seal
- F seal

Size Standards

- Metric Sizes
- Inch Sizes

Housing Colors

Green, Grey, Blue, Black

Manufacturing & Quality

Production Workflow

- Steel pipe cutting
- Lathe processing
- Heat treatment
- Polishing and Grinding
- Assembly and Inspection

Quality Control Process

- Rotary testing
- Noise inspection
- Appearance inspection
- Greasing and Rust prevention

Logistics

Standard Packaging

Plastic Bag + Single color box + Carton + Pallet