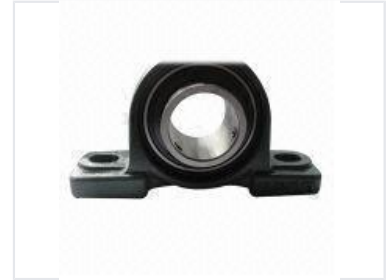
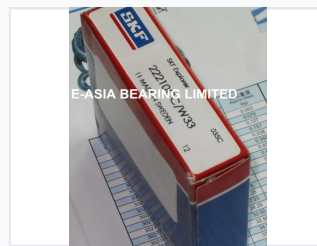


Pillow Block Bearing Unit

Pillow block bearings provide support for rotating shafts. The unit consists of a bearing housed within a mounting block, allowing for easy installation and alignment.



ADDITIONAL IMAGES



Product Overview

High-Performance Pillow Block Bearing Unit

This pillow block bearing unit is a mounted bearing solution engineered to provide robust support for rotating shafts in industrial machinery and power transmission applications. Designed for easy installation and alignment, the unit features a bearing securely housed within a durable cast iron or steel mounting block. These units come pre-lubricated and ready to install, ensuring reliable performance and smooth operation across a variety of load and speed requirements.

Technical Specifications

Available Mass Specifications

Metric	Value
Approx Mass (kg)	0.053
Approx Mass (kg)	0.079
Approx Mass (kg)	0.127
Approx Mass (kg)	0.157
Approx Mass (kg)	0.238
Approx Mass (kg)	0.34
Approx Mass (kg)	0.43

Bearing Type	Mounted ball or roller bearing
Mounting Style	Pillow block (flat surface mounting)
Key Features	Pre-lubricated, Ready-to-install, High load capacity, Misalignment compensation

Logistics

Packaging	Robust wooden crate with metal reinforcement
Transport Safety	Yes