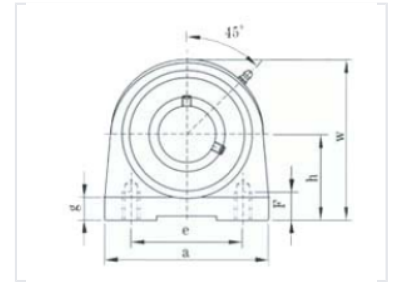


# Pillow Block Ball Bearing Unit

This pillow block bearing unit is designed for mounting on surfaces parallel to the shaft axis. It features a robust housing, self-aligning bearing, and provision for lubrication.



## Product Overview

### Pillow Block Ball Bearing Unit

This pillow block ball bearing unit is engineered for reliable rotary motion support in industrial environments. Designed for mounting on surfaces parallel to the shaft axis, it features a robust housing and a self-aligning bearing. The unit includes a 45-degree grease fitting for convenient maintenance and is suitable for a wide range of mechanical applications.

## Design & Features

### Bearing Type

Self-aligning

### Mounting Orientation

Parallel to shaft axis

### Lubrication

Grease fitting at 45-degree angle

## Dimensional Specifications

### Key Dimensions

**0 mm**

Base Length (a)

**0 mm**

Mounting Hole Distance (e)

**0 mm**

Base Height (h1)

**0 mm**

Bearing Height (h)

**0 mm**

Overall Height (w)

**0 mm**

Mounting Hole Diameter (d)