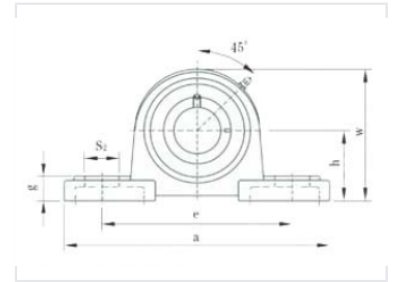


Pillow Block Ball Bearing Unit

Pillow block ball bearing unit designed for mounting on surfaces parallel to the shaft axis. It features a housing with a bearing insert, providing support and allowing for shaft rotation.



Product Overview

Industrial Pillow Block Bearing Unit

This pillow block ball bearing unit is engineered for mounting on surfaces parallel to the shaft axis, providing essential support for rotating shafts in industrial machinery. The assembly integrates a durable housing with a precision bearing insert, ensuring reliable performance and stability. It features a convenient 45-degree grease fitting for easy maintenance and lubrication, making it suitable for a wide range of mechanical applications.

Design & Features

Mounting Orientation	Parallel to shaft axis
Lubrication	45-degree grease fitting
Component Type	Pillow Block, Ball Bearing Unit, Industrial Support

Key Dimensions

Key Dimensions

0 mm Base Width (a)	0 mm Center Distance (e)	0 mm Shaft Center Height (H)	0 mm Overall Height (W)
-------------------------------	------------------------------------	--	-----------------------------------