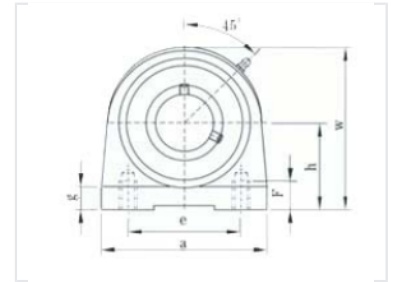


# Pillow Block Ball Bearing Unit

This pillow block ball bearing unit is designed for mounting on surfaces parallel to the shaft axis. The unit features a robust housing and a self-aligning ball bearing insert to accommodate shaft misalignment.



## Product Overview

### Pillow Block Ball Bearing Unit

This pillow block ball bearing unit is engineered for reliable rotary motion support in various industrial applications. It features a robust housing design optimized for mounting on surfaces parallel to the shaft axis. The unit includes a self-aligning ball bearing insert, which effectively accommodates shaft misalignment during operation.

## Technical Specifications

Design Features	Self-aligning, Parallel Mounting, Robust Housing
Grease Fitting Angle	45 degrees
Mounting Orientation	Parallel to shaft axis