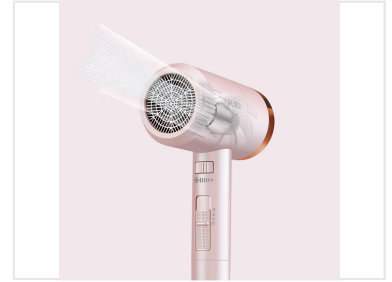
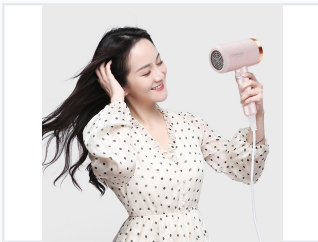


# Personal Care Hair Dryer

This hair dryer is designed for personal care use. It features multiple heat and speed settings to accommodate various hair types and styling preferences.



## ADDITIONAL IMAGES



## Product Overview

### Professional Performance for Home Use

This personal care hair dryer combines efficient drying power with advanced safety features to deliver salon-quality results at home. Engineered with a high-performance DC motor reaching 20,000 RPM and a U-shaped heating element, it ensures stable, even heat distribution for faster drying. With versatile stepless speed controls and three heat settings, it offers the precision needed for customized styling while protecting hair from heat damage.

## Technical Specifications

### Power & Performance

**1800 W**

Max Power

**20000 rpm**

Motor Speed

**240 V**

Max Voltage

### Electrical Requirements

Parameter	Specification
Voltage	220-240V
Frequency	50Hz
Power Range	1600-1800W

## Design & Build

### Physical Dimensions

- Dimensions: 240 x 70 x 130 mm
- Net Weight: 480g
- Cable Length: 2.0m
- Housing Material: Polycarbonate (PC)

## Features & Functionality

Core Features	Overheat Protection, Double Insulation, Cool Wind Setting, Removable Filter, Stepless Speed Control
Heat Levels	3 levels