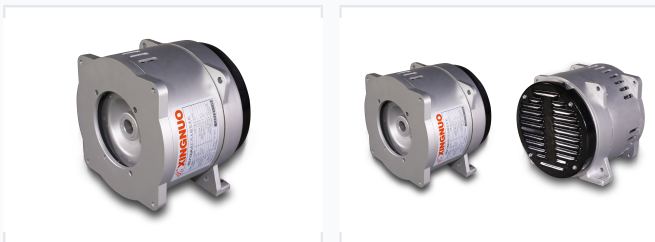


Permanent Magnet Rare-Earth Generator

This permanent magnet generator utilizes rare-earth magnets. It is designed for efficient and reliable power generation in diverse applications.



ADDITIONAL IMAGES



Overview

High-Performance Rare-Earth Power Generation

This permanent magnet rare-earth generator is engineered for reliable, high-efficiency power generation in demanding environments, such as mobile communication base stations. It features a robust design with advanced thermal management and high-grade insulation to ensure consistent performance. Built for continuous duty cycles, this unit provides a stable power output with minimal noise and a lightweight footprint.

Performance Metrics

Rated Power Range

5 kW Minimum Power	30 kW Maximum Power
------------------------------	-------------------------------

Rated Speed

2200 rpm Min Speed	3600 rpm Max Speed
------------------------------	------------------------------

Technical Specifications

Insulation Class

Class H

Thermal Limits

Parameter	Value
Ambient Temperature	40°C
Temperature Rise	125K

Enclosure Protection

IP21

Duty Cycle

S1 (Continuous Duty)

Cooling Method

ICO1

Stator Connection

Series Star

Key Features

Key Features

- Stable power output
- Lightweight design
- Low noise operation
- High-performance rare-earth magnets
- Integrated cooling vents

Compliance

Standards Compliance

IEC 60034-1, ISO 8528-3