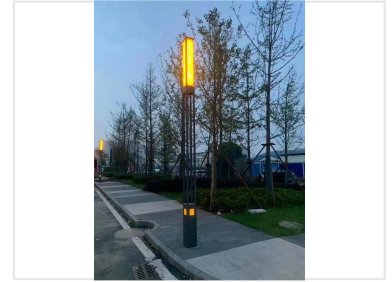
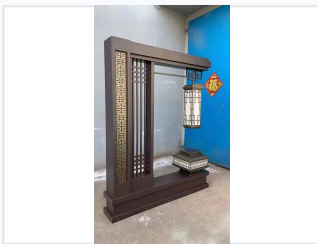


# Outdoor Decorative Landscape Lamp

Outdoor landscape lamps provide both decorative beauty and essential illumination for various environments. These lights enhance parks, gardens, and urban spaces, adding aesthetic appeal and practical value.



## ADDITIONAL IMAGES



## Product Overview

### Decorative Landscape Lighting

These outdoor decorative landscape lamps combine artistic design with functional illumination, serving both aesthetic and practical purposes. Available in styles ranging from abstract and avant-garde to realistic, they are designed to enhance environments such as parks, gardens, upscale residential areas, commercial pedestrian streets, and scenic tourist zones. Constructed with durable materials like copper and hot-dip galvanized steel, these fixtures are built to withstand outdoor conditions while providing ambient lighting.

## Technical Specifications

### Compatible Light Sources

- Metal halide lamps
- Energy-saving lamps
- LEDs

### Construction Materials

Copper, Hot-dip galvanized steel, Electrostatic powder coating

### Available Heights

10m, 11m, 12m

## Installation & Safety

### Safety and Foundation

Proper installation is critical for the safety and longevity of these fixtures. Foundation drawings are provided to ensure correct setup, and it is mandatory to ensure the lamp body is safely grounded during the installation process.

## Application

### Recommended Use Cases

Public Parks • Gardens • Residential Areas • Commercial Streets • Scenic Areas • Cultural Plazas

## Design Features

### Design Philosophy

Concept	Description
Diffuse Lighting	Minimizes harsh shadows for softer color transitions.
Composite Design	Integrates functional lighting with landscape aesthetics.
Safety Function	Can incorporate warning signals for pedestrians.