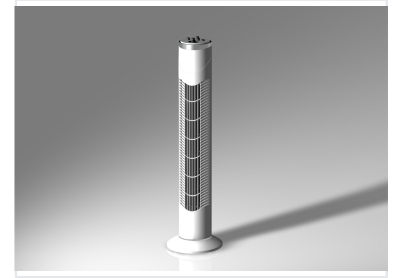


# Oscillating Tower Fan with Remote Control

This tower fan offers speed control and a timer function. It features a 75-degree oscillation angle and includes a remote control for convenient adjustments.



## Product Overview

### Modern Cooling Performance

This sleek tower fan is engineered for efficient air circulation while maintaining a minimal footprint in your workspace or living area. Its oscillating function ensures widespread cooling coverage, and the whisper-quiet motor allows for undisturbed operation. Equipped with intuitive timer settings and a convenient remote control, it provides a seamless user experience for diverse environments.

## Key Features

### Core Capabilities

- Wide-range oscillation for optimal airflow
- Space-saving slim tower design
- Integrated digital control panel
- Remote control included for remote operation
- Whisper-quiet motor technology

## Safety and Design

### Design & Safety Ratings

Safety-Grill, Stable-Base, Modern-Aesthetics, Compact-Footprint

## Performance

### Performance Metrics

Function	Status
Oscillation	Enabled
Timer	Programmable
Noise Level	Low/Quiet