

One-Hole Copper Lug with Inspection Window

UL Listed copper compression lug featuring color-coded identification. An inspection window allows for verifying proper wire insertion.



Product Overview



Standard barrel copper lug with inspection window for verifying wire insertion.

Professional Grade Copper Compression Lug

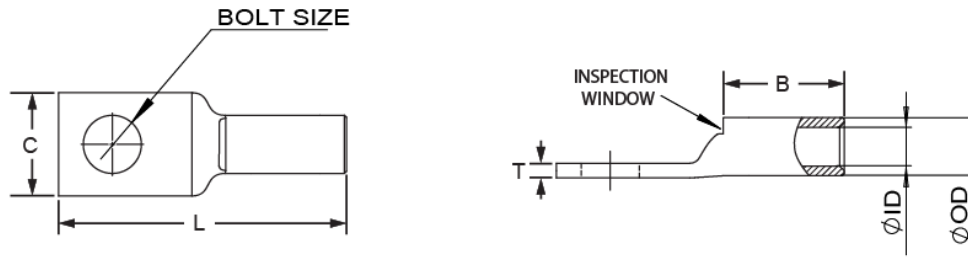
This UL-listed copper compression lug is engineered for reliable power and grounding applications. Designed with a standard barrel and an integrated inspection window, it allows for quick and accurate visual verification of proper conductor insertion. The lug is color-coded to ensure easy identification during installation, making it an ideal choice for professional electrical projects requiring secure and durable terminations.

Key Features

Product Highlights

UL Listed, Inspection Window, Color-Coded, Standard Barrel, One-Hole Design, High Conductivity Copper

Technical Specifications



Technical diagram illustrating key dimensions including bolt size, barrel length, and inspection window placement.

Common Part Specifications

Part Number	Wire Size	Bolt Size	Die Color
MD1410-10W	14-10 AWG	#8-#10	YELLOW
MDS8-10W	8 AWG	#8-#10	RED
MDS6-10W	6 AWG	#8-#10	BLUE
MDS4-10W	4 AWG	#10	GRAY
MDS2-14W	2 AWG	1/4	BROWN
MD1-14W	1 AWG	1/4	GREEN
MD1/0-14W	1/0 AWG	1/4	PINK
MD2/0-14W	2/0 AWG	1/4	BLACK
MD3/0-56W	3/0 AWG	5/16	ORANGE
MD4/0-14W	4/0 AWG	1/4	PURPLE
MD250-14W	250 KCM	1/4	YELLOW

Usage

Primary Applications

- Electrical Power Distribution
- Grounding Systems
- Code Conductor Termination
- Industrial Wiring