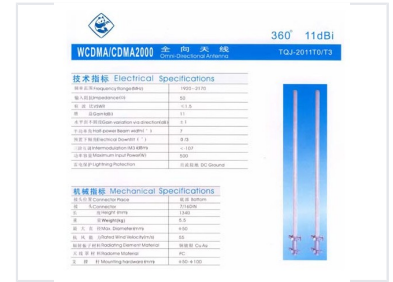


# Omni-Directional Antenna for WCDMA/CDMA2000 Networks

This Omni-Directional Antenna is designed for WCDMA/CDMA2000 networks, operating in the frequency range of 1920-2170 MHz. It provides a gain of 11 dBi with a gain variation via direction of  $\pm 1$  dB.



## Overview

### High-Performance Omni-Directional Antenna

This omni-directional antenna is engineered specifically for WCDMA/CDMA2000 network applications, operating within the 1920-2170 MHz frequency range. Designed for durability and reliable signal distribution, it features a robust construction with a copper and silver radiating element and a polycarbonate radome. With an adjustable electrical downtilt and high power handling capabilities, this unit is an ideal solution for professional telecommunications infrastructure.

## Electrical Specifications

### Key Performance Metrics

**11 dBi**

Gain

**500 W**

Max Input Power

**1.5**

VSWR

### Beamwidth & Tilt

Parameter	Value
Half-power Beamwidth	7 degrees
Electrical Downtilt	0-3 degrees

### Lightning Protection

DC Ground

Frequency Range: 1920-2170 MHz

Impedance: 50 Ω

## Mechanical Specifications

### Physical Dimensions

- Height: 1340mm
- Max Diameter: 50mm
- Weight: 5.5kg

Construction Materials: Copper and Silver (Cu Ag), Polycarbonate (PC)

Connector: 7/16DIN (Bottom)

Rated Wind Velocity: 55 m/s

Mounting Hardware Diameter: 50-100mm