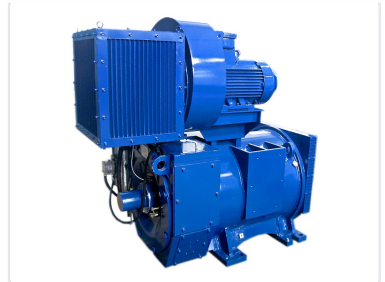


# Oil Drilling Rig Motor

This oil drilling motor is designed for demanding opencast mining applications. It is specifically engineered for integration into drilling rigs, delivering reliable power and performance.



## Product Overview

### High-Performance Oil Drilling Rig Motors

These industrial-grade motors are specifically engineered for the rigorous demands of oil drilling and mining operations. Designed for reliability and power efficiency, the series features robust construction to withstand harsh environmental conditions. With a wide range of power outputs from 400kW to 1100kW, these motors provide consistent performance and optimal cooling for extended operational lifespans.

## Technical Specifications

### Model Comparison Table

Model	Power (kW)	Voltage (V)	Speed (r/min)	Torque (N-m)	Weight (kg)
YJ23M	400	600	661	5779	3000
YJ23F9	600	600	661	8669	3100
YJ23L10	600	690	661	8669	3100
YJ31J	720	600	600	11460	3600
YJ13B6X1	720	690	600	11460	3600
YJ13A8	800	600	741	10310	3600
YJ31H6	800	690	741	10310	3600
YJ243A	970	660	794	11667	4100
YJ31F7	1000	600	803	11893	3500
YJ240A	1100	600	500	21010	6300
YJ23L2	600	600	1000	5730	3000
YJ23K4	700	690	1000	6685	3100

## Safety & Compliance

### Explosion Proof Certification

Exde a BT3 Gc, Exe a T3, Exdepx a BT4 Gc