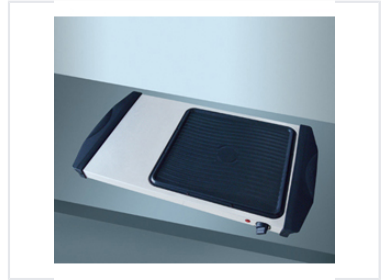


Non-Stick Electric Griddle with Adjustable Temperature

This electric griddle features a durable non-stick cooking surface, providing even heat distribution for consistent cooking results. The adjustable temperature control allows for precise cooking of various foods, and its compact design makes it a convenient addition to any kitchen.



Product Overview

Versatile Cooking Performance

This electric griddle features a durable non-stick cooking surface designed for even heat distribution and consistent culinary results. The adjustable temperature control provides the precision needed for a wide variety of foods, ranging from delicate pancakes to savory grilled meats. With its compact design, integrated handles, and removable drip tray, this appliance combines convenience with healthier cooking options.

Key Features

Key Features

- Durable non-stick cooking surface
- Adjustable temperature control
- Integrated safety handles
- Removable drip tray
- Compact, portable design

Usage & Applications

Best For

Small Kitchens, Dorm Rooms, Camping Trips, Breakfast Cooking, Grilled Meats

Maintenance

Cleaning & Maintenance

Features an easy-to-clean non-stick surface and a removable drip tray to collect excess grease for simple cleanup.