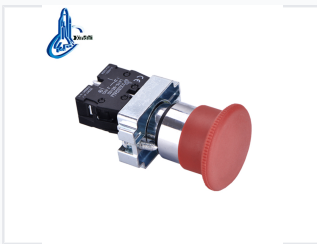


# Mushroom Head Emergency Stop Push Button Switch

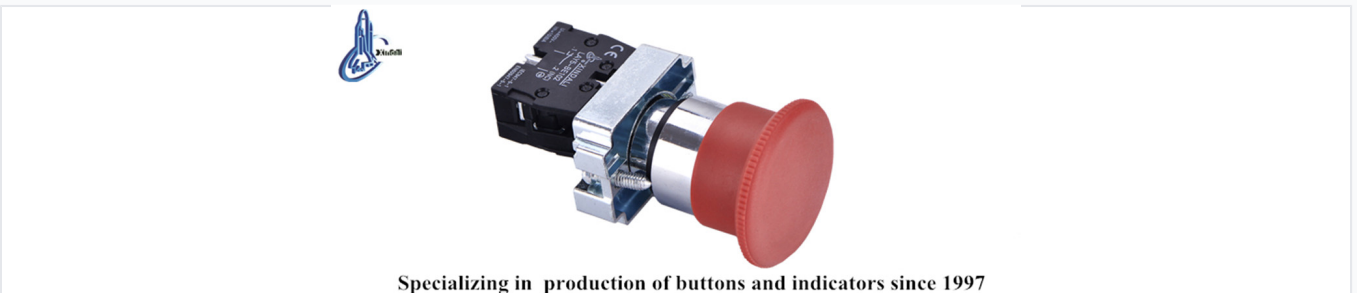
This emergency stop push button switch features a red mushroom-shaped actuator. It is designed for quick and reliable emergency stops in industrial applications.



## ADDITIONAL IMAGES



## Overview



Specializing in production of buttons and indicators since 1997

The mushroom-head design ensures high visibility and ease of operation during emergencies.

## Industrial Emergency Stop Solution

The LAY5-BC42 is a high-performance emergency stop push button switch engineered for critical industrial control applications. Featuring a prominent red mushroom-head design, it ensures immediate and reliable circuit interruption in emergency situations. The unit is constructed with durable materials, including zinc alloy and high-grade anti-flam plastic, and utilizes silver alloy contacts for superior anti-electrical erosion properties, ensuring long-term reliability in demanding environments.

## Technical Parameters

### Electrical Ratings

**660 V**

Max AC Voltage

**400 V**

Max DC Voltage

**10 A**

Heating Current

### Performance Specifications

Parameter	Value
Insulation Resistance	e5M©
Contact Resistance	d2m©
Withstand Voltage	AC 2.5KV/min
Voltage Wave	±20%
Brightness	60cd/m2

## Durability

### Service Life

- Mechanical Life (Pushbutton): 1,000,000 cycles
- Mechanical Life (Selector Switch): 500,000 cycles
- Electrical Life (Pushbutton): 5,000,000 cycles
- Electrical Life (Selector Switch): 250,000 cycles
- Continuous Working Life: 100,000 hours

## Certifications

### Compliance & Standards

CE, ISO 9001, RoHS, UL, GB/T14048.1, IEC60947-5-1

## Design

### Construction Materials

Zinc Alloy Body • High-grade Anti-flam Plastic • Silver Alloy Contacts