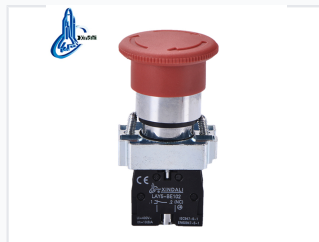
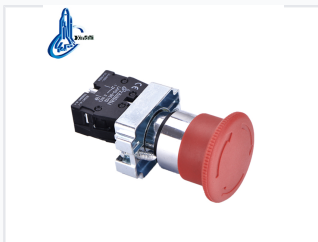


Mushroom Head Emergency Stop Button with Release Lock

This emergency stop button features a mushroom-shaped actuator for easy activation. It includes a release lock mechanism to prevent accidental resets and ensure operator safety.



ADDITIONAL IMAGES



Product Overview

Industrial Emergency Stop Solution

This mushroom-head emergency stop button is engineered for critical safety applications in industrial environments. Featuring a robust release lock mechanism, it ensures reliable shutdown and prevents accidental reactivation of machinery. Designed to meet stringent international safety standards, this unit provides a durable, high-visibility control interface for power stations, distribution cabinets, and automated control systems.

Technical Specifications

Mechanical Life

1000000 cycles
Pushbutton

500000 cycles
Selector Switch

Electrical Life

5000000 cycles
Pushbutton

250000 cycles
Selector Switch

Rated Insulation Voltage	600 V
Conventional Heating Current	10 A
Insulation Resistance	e5M©
Contact Resistance	d2n©
Withstand Voltage	AC 2.5KV/min

Compliance & Standards

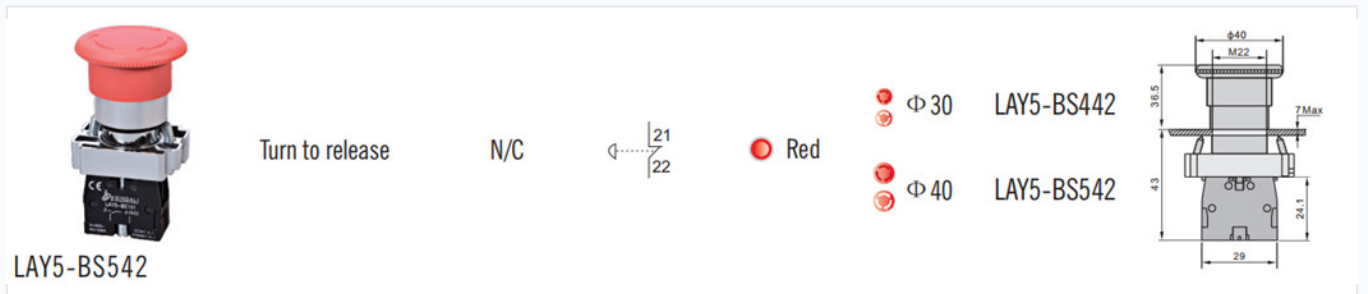
Standards Compliance

- GB/T14048.1
- IEC60947-5-1
- EN60947-5-1

Certifications

CE, ISO 9001, RoHS, UL

Dimensions & Mounting



Mounting Specifications

Parameter	Value
Mushroom Head Diameter	40mm
Mounting Hole	M22
Overall Height	43mm
Max Panel Thickness	7mm