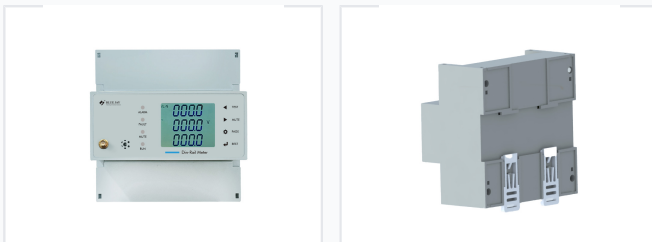


Multifunction WiFi 4G IOT Energy Meter

This energy meter is widely used for all power parameter measurement, energy measurement, and electrical fire monitoring and control. It is suitable for medium and low voltage systems, SCADA, EMS, and DCS integrators.



ADDITIONAL IMAGES



Overview

Advanced IoT Energy Management

The DEM-6MC is a high-precision multi-function energy meter designed for comprehensive power monitoring and prepaid management in residential and industrial settings. It features a Class 0.2 precision module for real-time acquisition of three-phase electrical data, including harmonics and unbalance. With versatile wireless connectivity options like 4G, WiFi, and IoT, it enables seamless remote monitoring and centralized control for modern energy infrastructure.

Performance Metrics

Key Performance Metrics

0.2 Class

Accuracy Class

63 th

Harmonic Measurement

Measurement Capabilities

Measured Parameters

- Three-phase voltage
- Current
- Active/Reactive Power
- Energy consumption
- Current unbalance
- 63rd Harmonics

Connectivity & Communication

Wireless Communication Options

WiFi, 4G, Zigbee, LoRa, NB-IoT

Wired Communication

RS485 (MODBUS-RTU)

Control & Management

Prepaid Management

- Automatic tripping when credit expires
- Power restoration via DI input
- Remote command restoration

Interface & Operation

HMI Features

- Sound and light alarm system
- Manual mute function
- Manual reset option
- Page navigation buttons

Status Indicators

ALARM, FAULT, RUN, TEST

Installation

Mounting Type

DIN-Rail Mounting