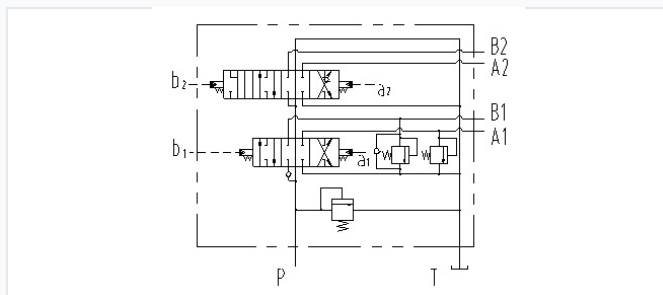


# Multi-Way Hydraulic Directional Control Valve

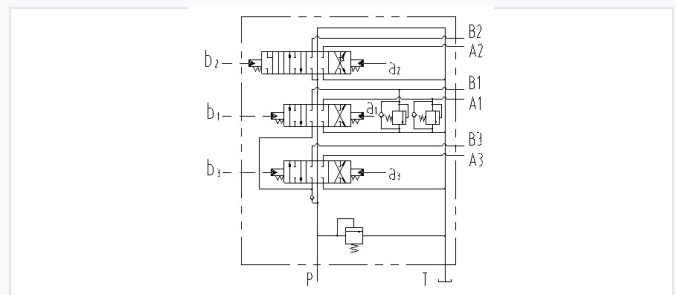
This multi-way valve offers users a choice between 2 or 3 slices. It features a wide fine-tuning control range and increasing flow characteristics.



## Overview



Hydraulic system schematic and port configuration.



Internal layout and control circuitry schematic.

## Versatile Directional Control

This integral multi-way directional control valve is engineered for high-performance hydraulic systems in construction and earth-moving machinery. It offers flexible 2-slice or 3-slice configurations, featuring proportional pilot control for refined maneuverability. Designed for reliability, the valve integrates essential safety components including main safety, overload, and check valves in a modular, easy-to-maintain structure.

## Technical Specifications

Rated Pressure	20 MPa
Hydraulic Fluid Compatibility	Mineral oil (HL, HLP) per DIN 51 524
Operating Temperature	-20 to 100 °C
Viscosity Range	10 to 380 mm <sup>2</sup> /s
Required Oil Cleanliness	GB/T 14039-93 19/16, NAS 1638 level 10

## Performance Metrics

### Model Performance Comparison

Feature	YGDF32	YGDF25
Rated Flow (L/min)	250 (Max 350)	160 (Max 250)
Main Overflow Valve Range (MPa)	8–20	8–20
Secondary Overflow Valve Range (MPa)	10–25	10–25
Mass (2-section, kg)	38	36