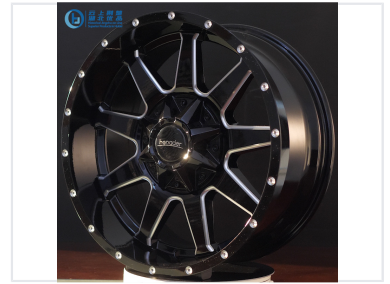


Multi-Spoke Alloy Wheel with Black and Silver Finish

This custom-designed alloy wheel features a deep black finish with contrasting silver accents. Its multi-spoke design offers a bold and aggressive look, enhancing the aesthetic appeal of any vehicle.



ADDITIONAL IMAGES



Product Overview

High-Performance Multi-Spoke Alloy Wheel

This multi-spoke alloy wheel features a striking black and silver finish, designed to deliver both aesthetic appeal and robust performance. Engineered for durability and strength, it offers a deep-dish profile that enhances the aggressive stance of various vehicle models. Ideal for aftermarket upgrades, this wheel is built to withstand demanding driving conditions while elevating the vehicle's overall look.

Technical Specifications

Hole Count Options

- 5
- 6
- 8
- 10
- 12

Size	20x9.0
Offset (ET)	-12/0
PCD Range	114.3-180
Center Bore (CB)	78.1-125

Manufacturing & Finish

Technical Craft	Painting, Milling, Machining
-----------------	------------------------------

Compatibility & Logistics

Vehicle Compatibility

Patrol • Prado • Land Cruiser • GMC

Minimum Order Quantity

60 pcs/item