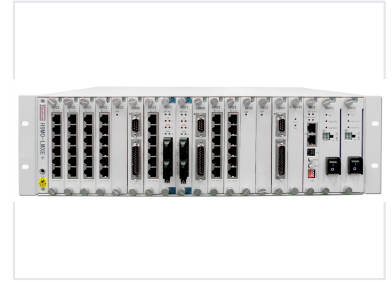


Multi-Service SDH/MSTP Multiplexer

The H9MO-LMXE+ is a carrier-class, cost-effective, compact STM-1/STM-4/STM-16 SDH/MSTP platform. It facilitates efficient transport of traditional TDM and emerging data traffic for service providers in metro and access networks.



Overview

Carrier-Class Multi-Service Platform

The H9MO-LMXE+ is a compact, 3U high carrier-class SDH/MSTP platform designed for metro and access network applications. It efficiently transports traditional TDM and emerging data traffic, serving as a critical gateway node between core SDH networks and remote CPE boxes. This flexible system supports a wide range of optical and electrical interfaces, making it ideal for both ring and mesh network topologies.

Physical Specifications

Slot Allocation

Function	Slot Count
Power Cards (1+1)	2
Network Management	1
Aggregation (Uplink)	2
Service (Downlink)	14

Chassis Height	3 U
Rack Width	19 inch
Total Slots	19

Network & Interface Capabilities

Uplink Interfaces

- STM-16 Optical
- STM-4 Optical
- STM-1 Optical
- STM-1 Electrical

Service (Downlink) Interfaces

- E1
- E3
- DS3
- V.35
- FE
- GE
- FXO
- FXS
- 4W
- E&M
- OW
- RS-232
- V.24
- RS-422
- 485
- V.11

Supported SDH Rates	STM-1, STM-4, STM-16
PCM Functionality	Yes