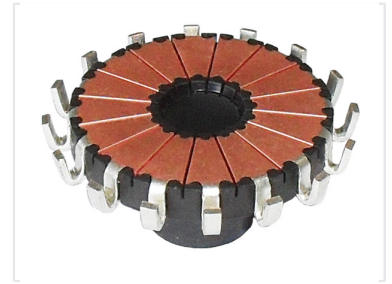


# Multi-Position Rotary Switch

This multi-position rotary switch is designed for selecting different circuits or functions. It features a circular array of contact segments separated by insulation and connected to terminals.



## Product Overview

### Precision Multi-Position Rotary Switch

This multi-position rotary switch is engineered for reliable circuit selection and function control in diverse electronic applications. Featuring a robust circular array of contact segments and a central hub for shaft mounting, it ensures consistent connectivity and precise operation. Its design facilitates seamless integration into control panels and electronic devices where multiple switching positions are required.

## Technical Specifications

Switch Type	Multi-Position Rotary
Key Design Features	Circular Contact Array, Central Hub Mounting, Peripheral Terminals
Mounting Configuration	Central Hub Shaft Mount