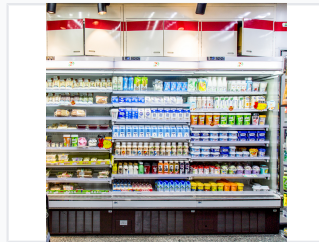


Multi-Deck Open Display Refrigerator

This multi-deck open display refrigerator is designed for commercial use. It features multiple shelves for displaying a variety of products and a plug-in design for easy installation.



ADDITIONAL IMAGES



Product Overview

Professional Multi-Deck Display Solution

This multi-deck open showcase refrigerator is engineered for high-visibility retail environments, offering excellent display space for chilled goods. It features a dual-layer air curtain system that enhances cooling efficiency while significantly reducing energy consumption. Designed with both aesthetics and functionality in mind, the unit provides a seamless shopping experience while maintaining a consistent 0°C temperature for perishable items.

Technical Specifications

Operating Temperature	0 °C
Cooling Technology	Dual layer air curtain

Design & Features

Installation Plug-in • Self-contained	
Lighting	Energy-efficient LED lighting
Access Design	Open front for easy customer access
Shelving	Multiple adjustable shelves

Usage

Ideal For	Supermarkets, Convenience Stores, Retail Environments
-----------	---