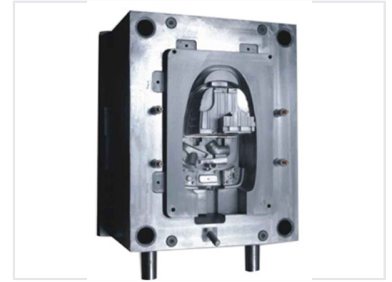


Multi-Cavity Injection Moulding Tool

This precision-engineered injection moulding tool is designed for creating complex plastic parts. The robust mould features a multi-cavity design for increased production efficiency.



Product Overview

High-Efficiency Precision Tooling

This multi-cavity injection moulding tool is engineered for the high-volume production of intricate plastic components. Constructed from high-grade tool steel, the mould ensures exceptional durability and long-term performance under demanding manufacturing conditions. Its advanced design incorporates integrated cooling channels to provide superior thermal management, directly enhancing cycle times and part consistency.

Technical Specifications

Design Configuration	Multi-cavity
Material	High-grade tool steel
Thermal Management	Yes

Manufacturing Capabilities

Operational Advantages

- Multi-cavity throughput optimization
- Integrated cooling channels
- Durable steel construction

Primary Application	High-volume production, Intricate components, Complex plastic parts
---------------------	---