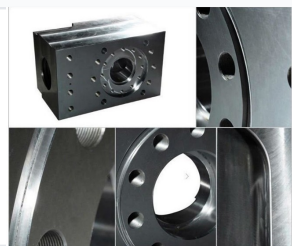


Mud Pump Spare Parts for BOMCO Pumps

These spare parts are compatible with BOMCO F1600, F1300, F1000, F800, and F500 mud pumps. The components include liner pistons and other essential parts for maintaining optimal performance.



ADDITIONAL IMAGES



Product Overview

Premium Mud Pump Components

These mud pump spare parts are engineered for high-performance drilling environments, offering superior reliability for power and hydraulic systems. Designed with advanced metallurgical properties, including forged 42CrMo steel and high-strength welded structures, these components ensure long-term durability under extreme pressure. The system includes integrated cooling and lubrication management to optimize the service life of critical wear parts such as liners and pistons.

Power End Specifications

Crankshaft Material	Alloy Steel
Lubrication Method	Forced Lubrication, Splash Lubrication

Hydraulic Cylinder Details

Technical Dimensions

Metric	Value
Height (mm)	495.4
Width (mm)	800
Diameter (mm)	209.55

Cylinder Construction	Forged Alloy Steel
-----------------------	--------------------

Pulsation Dampener

Dampener Properties

957.2 mm

Overall Height

406.4 mm

Top Diameter

Dampener Material

Welded Q235 Steel

Compatibility & Features

Compatible Series

F1600 • F1300 • F1000 • F800 • F500