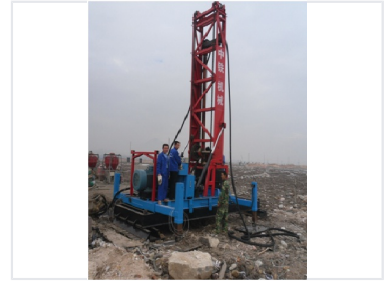


Mud Curing Piling Machine for Land Reclamation

This mud curing piling machine is engineered for land stabilization and consolidation. It is designed to meet the requirements of enclosing sea for farmland and transforming tidal flats in coastal cities.



Overview

High-Efficiency Mud Curing Piling Solution

This mud curing piling machine is engineered for reliable and efficient piling operations in demanding land reclamation environments. Featuring a robust steel frame and a powerful hydraulic system, it ensures operational stability and precision. The crawler-type chassis provides enhanced mobility across various terrains, while the tall mast design supports deep piling applications for diverse construction projects.

Technical Specifications

Chassis Type	Crawler-type
Frame Material	Robust Steel
Key Features	Hydraulic System, Deep Piling Capable, High Mobility, Stable Mast Design

Operational Metrics

Operational Requirements

- Trained operating personnel required
- Suitable for land reclamation
- Versatile terrain adaptability