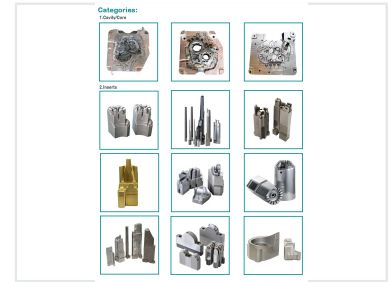
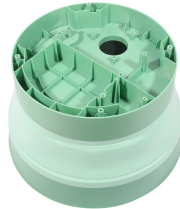


# Mould Components for Industrial Manufacturing

Mould components are essential parts used in industrial manufacturing. These include core/cavity inserts, pins, and plates for creating complex geometries.



## Product Overview



Precision-engineered mould component designed for industrial applications, featuring robust construction for demanding environments.

### Precision Mould Components

These high-precision mould components are engineered for demanding industrial manufacturing environments, including plastic injection moulding and die casting. Crafted from premium-grade materials, the selection includes core/cavity inserts, sprue bushings, and various plates designed to ensure durability and dimensional accuracy. With advanced heat treatment and surface finishing options, these components are optimized for extended service life and high-efficiency production cycles.

## Technical Specifications

Categories:



A collection of cavity/core inserts and various mould inserts crafted from high-quality materials for durability and performance.

### Material Grades

- 1.2343
- 1.2344
- 1.2367
- SKD61 (DAC, DHA1)
- DAC55
- Premium H13
- 8407
- DIVAR
- STAVAX

### Available Components

Core/Cavity, Inserts, Core Pin, Jet Cooler, Water Jacket, Vent Chill, Sprue Bushing, Sprue Spreader, Slide Base, Mold Base

### Tolerance Range

±0.01mm - ±0.1mm

## Manufacturing & Quality

### Surface Treatments

Polishing • Mirror Polishing • Nitriding • Specialized Coating

### QC System

100% inspection before shipment

## Logistics

### Packaging Options

- Bubble bag
- Carton box
- Plywood case

### Standard Lead Time

14-35 days

### Shipping Methods

Express (DHL, Fedex, UPS, TNT), Train, Sea