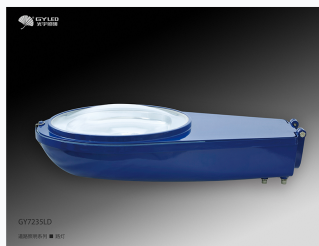
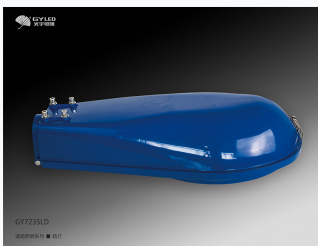


# Motorcycle Spark Plug

This spark plug is designed for motorcycle engines. It features various types such as platinum, iridium, resistor, gas, v-grooved, pointed, multi-electrode, and standard electrode.



## ADDITIONAL IMAGES



## Product Overview

### High-Performance Motorcycle Spark Plugs

These high-performance spark plugs are engineered for reliability and extended engine service life. Featuring advanced electrode designs, they provide optimal combustion efficiency, which helps improve fuel economy and reduce emissions. Designed to withstand high temperatures and pressures, these plugs are suitable for a wide range of motorcycle models.

## Technical Specifications

### Model Compatibility Examples

- E8TC
- E6TC
- D8TC
- A.TC

### Available Types

Platinum, Iridium, Resistor, Gas, V-grooved, Pointed, Multi-electrode, Standard electrode

## Commercial Terms

### Quality Grade

Customizable based on buyer requirements

### Delivery

On-time delivery guaranteed