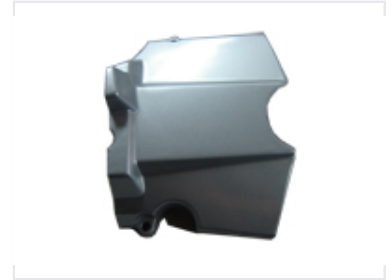


# Motorcycle Fairing Housing

This motorcycle fairing housing protects internal components. It is typically made of molded plastic or composite and enhances the motorcycle's appearance.



## Product Overview

### High-Performance Fairing Housing

This motorcycle fairing housing is engineered to provide a durable and aerodynamic solution for protecting internal motorcycle components. Featuring a complex molded design with precise mounting points, it ensures a secure fit for optimal performance. The metallic silver finish offers a sleek, professional aesthetic suitable for various motorcycle models and customization projects.

## Technical Specifications

|                      |  |
|----------------------|--|
| Finish               | Metallic Silver/Gray   |
| Material Composition | Molded Plastic/Composite   |
| Design Features      | Aerodynamic Profile, Integrated Mounting Points, Complex Molded Geometry |

## Usage & Application

### Primary Function

- Internal component protection
- Aerodynamic enhancement
- Aesthetic bodywork