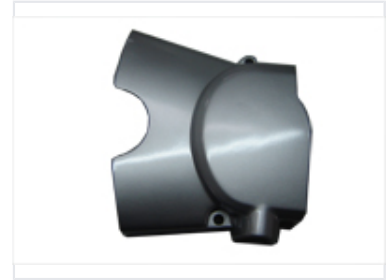


# Motorcycle Engine Side Cover

This motorcycle engine side cover is crafted from cast aluminum or durable plastic composite. It shields the engine's internal parts from external elements and potential impacts.



## Product Overview

### Engine Protection Solution

This motorcycle engine side cover is a critical protective component engineered to shield internal engine parts from environmental hazards such as dirt, debris, and impacts. Featuring a complex, contoured design with specific mounting points, it ensures a precise fit for engine integrity. The durable construction and smooth surface finish offer both corrosion resistance and aesthetic appeal for high-performance maintenance.

## Technical Specifications

Material Composition	Cast aluminum or durable plastic composite
Surface Finish	Coated for corrosion resistance
Key Features	Corrosion Resistant, Impact Protection, Contoured Design

## Compatibility & Fitment

Mounting	Precision mounting points for specific engine models
Integration	Yes