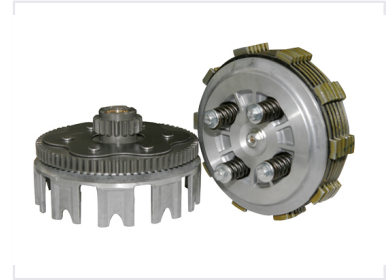


# Motorcycle Clutch Assembly

This motorcycle clutch assembly is a crucial part of the transmission system. It consists of a clutch basket, clutch plate pack, and pressure plate with springs.



## Overview

### High-Performance Clutch Assembly

This motorcycle clutch assembly is engineered for reliable power transfer and smooth operation. The system features a durable clutch basket, a comprehensive friction and steel plate pack, and a robust pressure plate with high-tension springs. Designed for consistent engagement, this assembly is built to withstand the rigors of motorcycle operation while maintaining optimal friction coefficients.

## Technical Construction

### Component Materials

Component	Typical Material
Clutch Basket	Aluminum or Steel
Pressure Plate	Steel

### Included Components

- Clutch basket with gear
- Friction plates
- Steel separator plates
- Pressure plate
- Clutch springs

## Performance Features

### Key Attributes

High Friction Coefficient, Smooth Operation, Durable Construction